



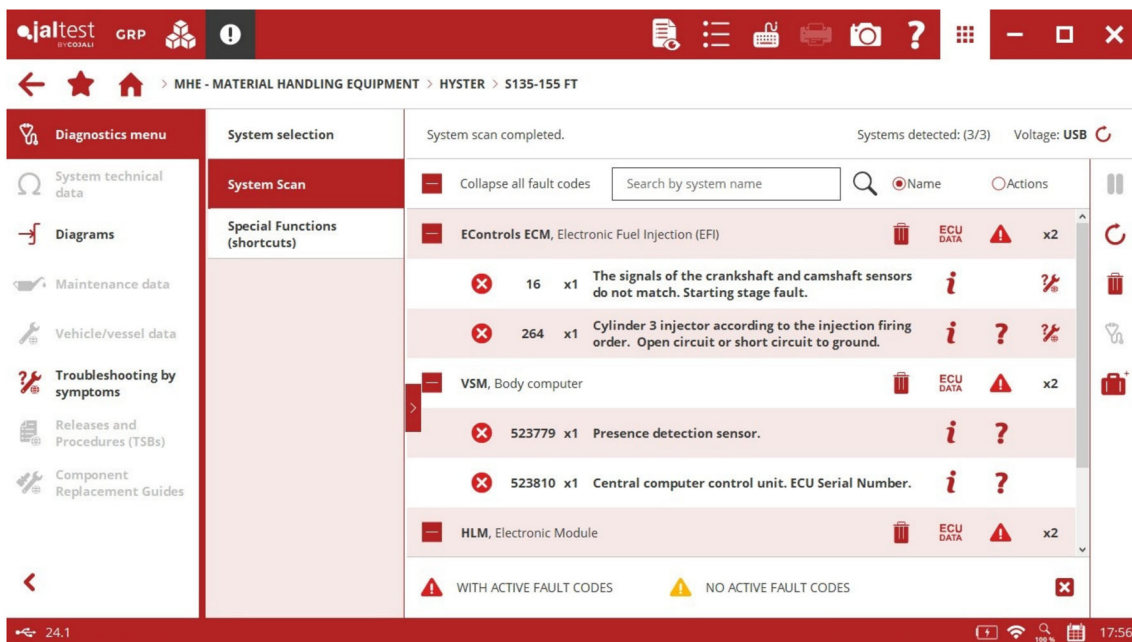
INNOVATIONS 24.1

# SOFTWARE INNOVATIONS

The new software version Jaltest 24.1 once again offers more improvements and innovations that consolidate this tool as a benchmark in all-makes diagnostics for commercial vehicles, agricultural equipment, OHW equipment, material handling equipment and vessels.

With the innovations of the graphic interface, it is possible to:

- Add new formats to the table cells and highlight data.
- Attach the diagnostics report to a Jaltest Feedback.
- Clear fault codes directly from the results of a system scan process.

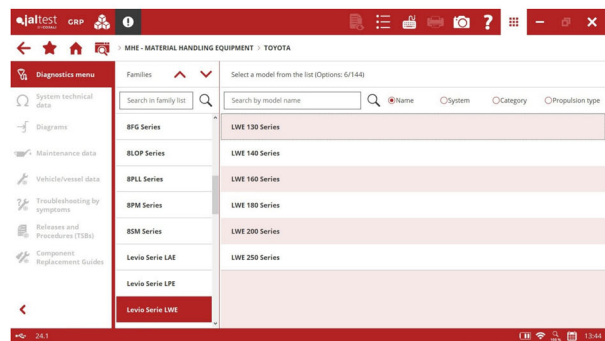
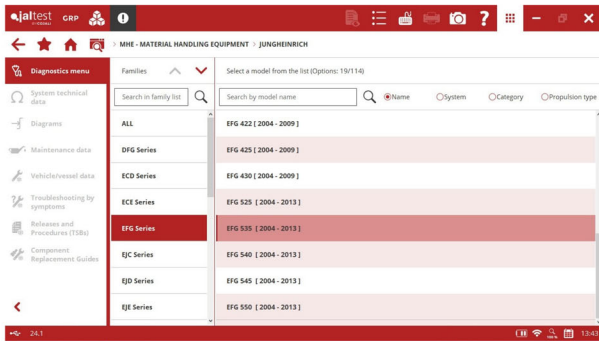


# MAKES AND MODELS

Take into account that this document is only a summary of the most relevant information of this new version. For further information, please visit Jaltest Report.

This version includes **PB** and **ZPMC** makes.

In addition, the number of models in the following makes has increased: **BT** (Cargo Serie CE family), **JUNGHEINRICH** (EFG Serie family), **MOFFETT** (M8 Serie family), **STILL** and **TOYOTA** with new electric models of pallet jacks, stackers and order-picking pallet trucks.

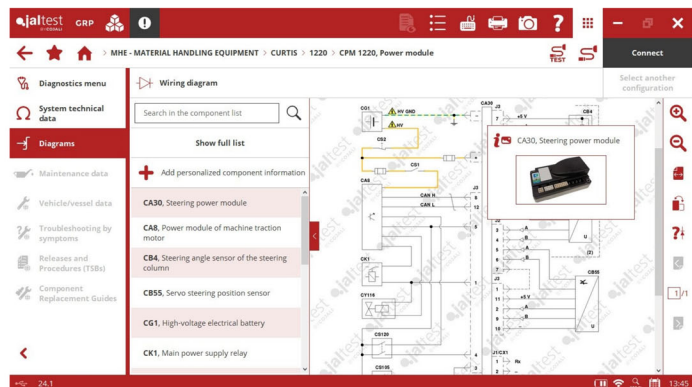


# DIAGNOSTICS AND SYSTEMS

## CURTIS

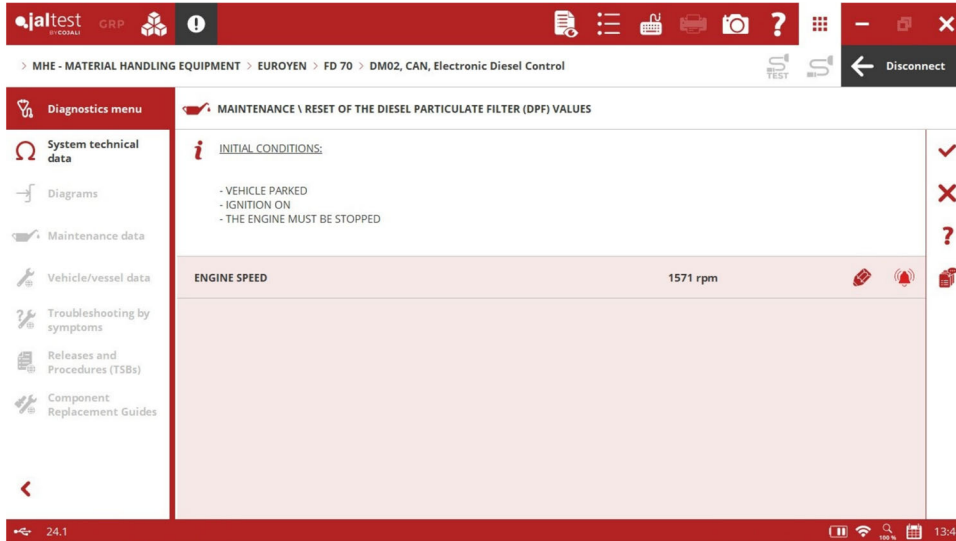
⊕ **JDC 569.9** connector.

**CPM 1220** power module that includes wiring diagram configurations.



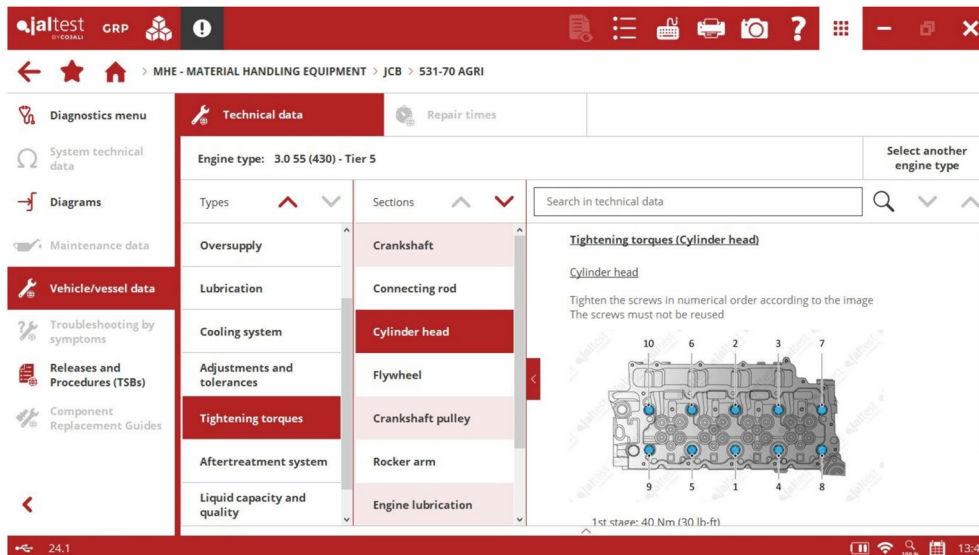
## EUROYEN

Doosan **DM02** engine control system, reset of the Diesel Particulate Filter values.



## JCB

Vehicle data in **531 (500 Series family)** models that include belt diagrams, tightening torques, and much more.



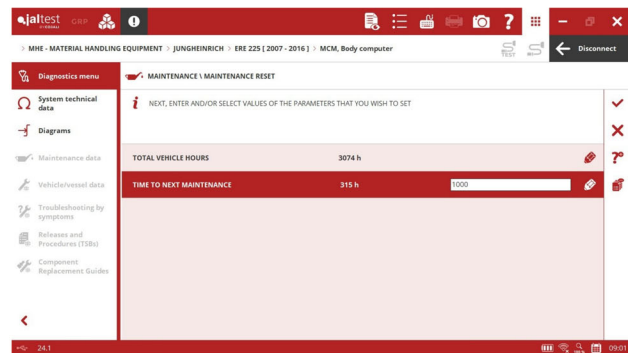
## JLG

**EMR5 – EDC MD1** engine control system, checks and activations of the system.

## JUNGHEINRICH

**MCM** central computer, steering calibration for **EFG 110**, **EFG 113** and **EFG 115** models.

**MCM** central computer, maintenance reset in pallet jacks of the **ERE Series** family.



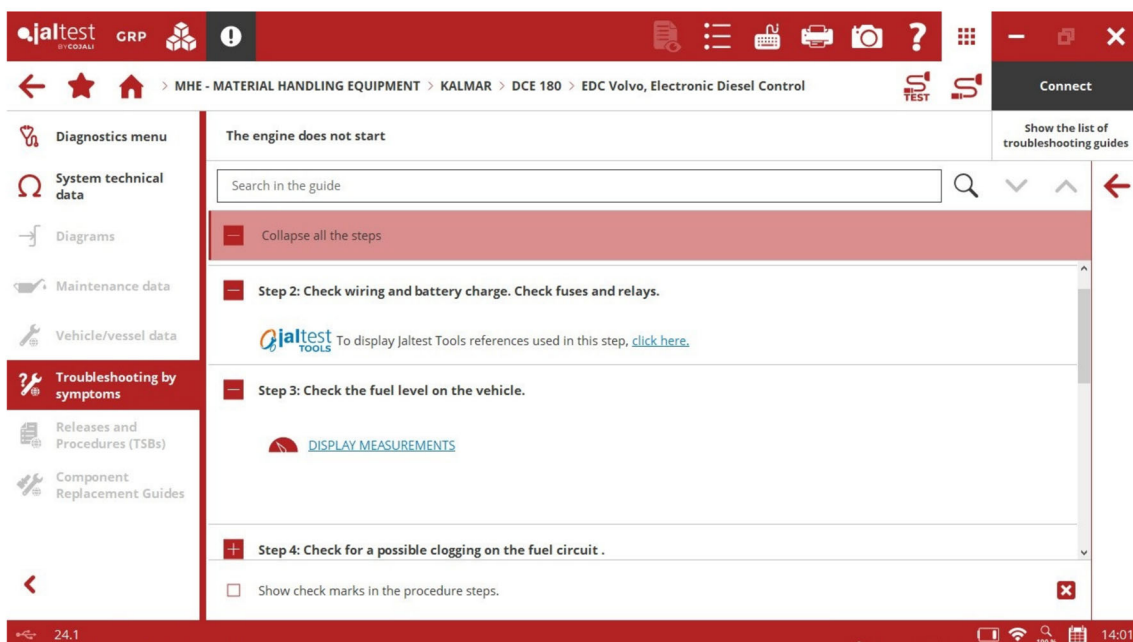
In addition, new wiring diagram configurations available for pallet jacks, stackers and order-picking pallet trucks in **ECE Series**, **EJD Series**, **EMC Series**, **EMD Series**, **ERC Series**, **ERD Series**, **ESC Series**, **ESD Series** and **ESE Series** families.

## LINDE

Wiring diagram configurations of the **LAC** power module for models of **T Series**, **1151 Series** or **L Series**, **1172 Series** families.

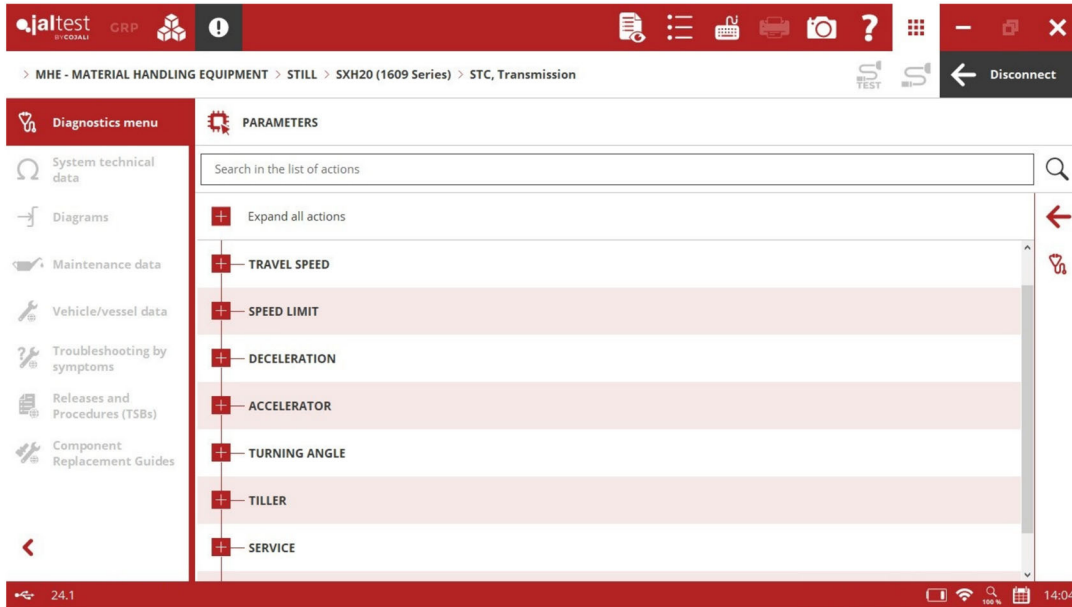
## KALMAR

Troubleshooting guides by symptom in the **EDC Volvo** engine control system.

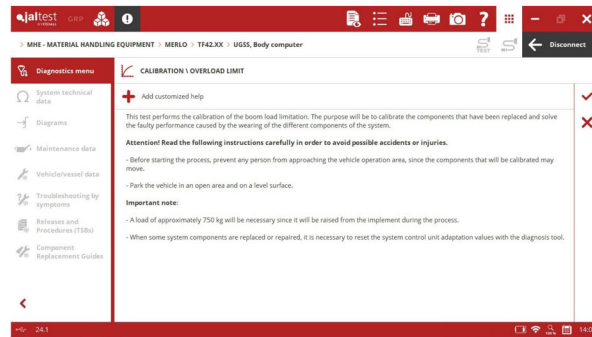
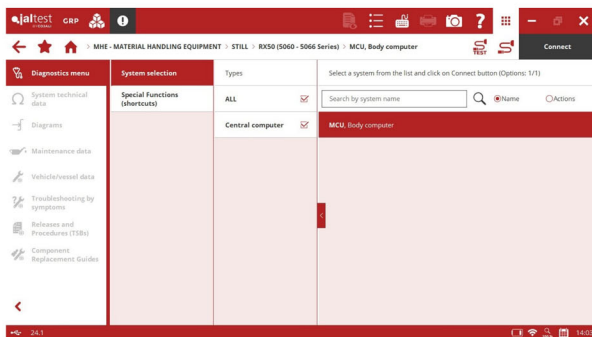


## MERLO

**UGSS** load management system, overload limit calibration.



## STILL



⊕ **MCU** central computer in **Rx50** electric forklifts of second generation.

**LAC** system for electric pallet jacks and stackers, setting of the control parameters of the travel speed, the acceleration, the safety and the energy saving management, etc.

## TOYOTA

Calibration functionalities of the control levers through the **BC** central computer for **8FD Series** and **8FG Series** forklifts with diesel and LPG engines.

The screenshot displays the jaltest diagnostic software interface. At the top, a navigation breadcrumb shows the path: MHE - MATERIAL HANDLING EQUIPMENT > TOYOTA > 8FD 40 Series > BC, Body computer. The main content area is titled "CALIBRATION \ CONTROL LEVERS \ MAST CONTROL LEVER". It includes a section for "Add customized help" with a red checkmark, followed by instructions: "Park the vehicle in an open area and on a level surface." and an "Important note" stating that system components must be reset after replacement and that no active fault codes should be present. A photograph of the mast control lever is shown at the bottom of the instructions. The interface also features a "Diagnostics menu" on the left with options like System technical data, Diagrams, Maintenance data, and Vehicle/vessel data. The bottom status bar shows the version number 24.1, signal strength, Wi-Fi, battery level (100%), and the time 14:06.