



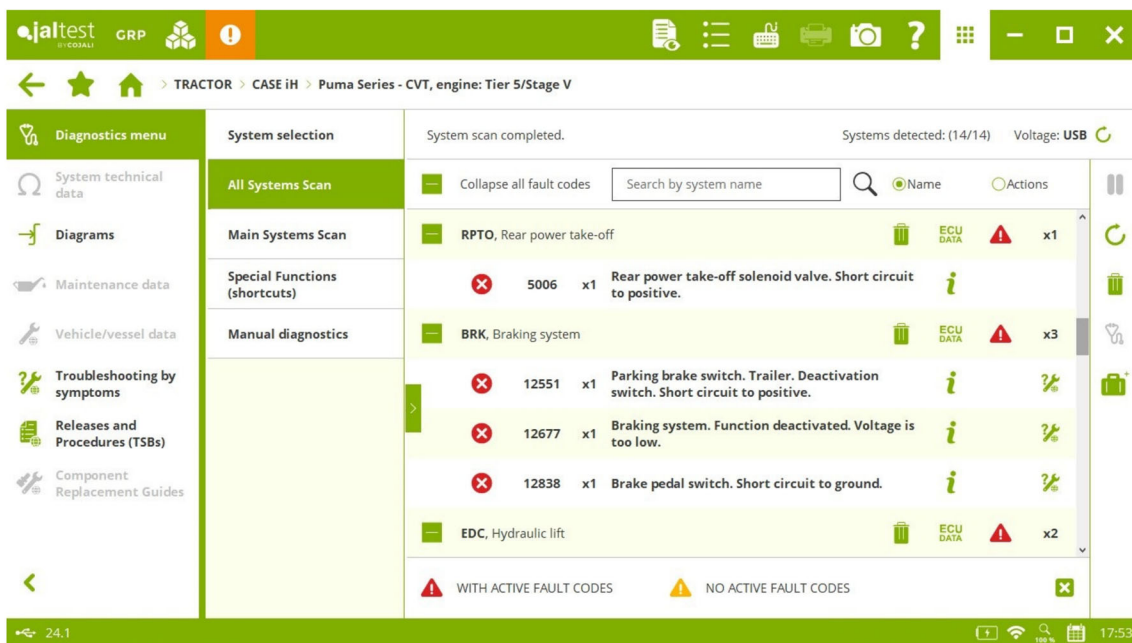
INNOVATIONS 24.1

SOFTWARE INNOVATIONS

The new software version Jaltest 24.1 once again offers more improvements and innovations that consolidate this tool as a benchmark in all-makes diagnostics for commercial vehicles, agricultural equipment, OHW equipment, material handling equipment and vessels.

With the innovations of the graphic interface, it is possible to:

- Add new formats to the table cells and highlight data.
- Attach the diagnostics report to a Jaltest Feedback.
- Clear fault codes directly from the results of a system scan process.



MAKES AND MODELS

Take into account that this document is only a summary of the most relevant information of this new version. For further information, please visit Jaltest Report.

Some of the new models and makes in Jaltest are listed below.

TRACTOR

CLASS

Axion 9X0 (A64), engine: Tier 5/ Stage V

LANDINI

5 Series, engine: Tier 5/ Stage V

MASSEY FERGUSON

3400 Series

SELF-PROPELLED AND TRAILING IMPLEMENT

This version includes the new make **SILOKING**.

PELLENC

Buggy Maxi 5000 S

SILOKING

SelfLine 4.0 Compact

SelfLine 4.0 Premium

SelfLine 4.0 System 1000+

SelfLine 4.0 System 500+

TERRAGATOR

8203

8204

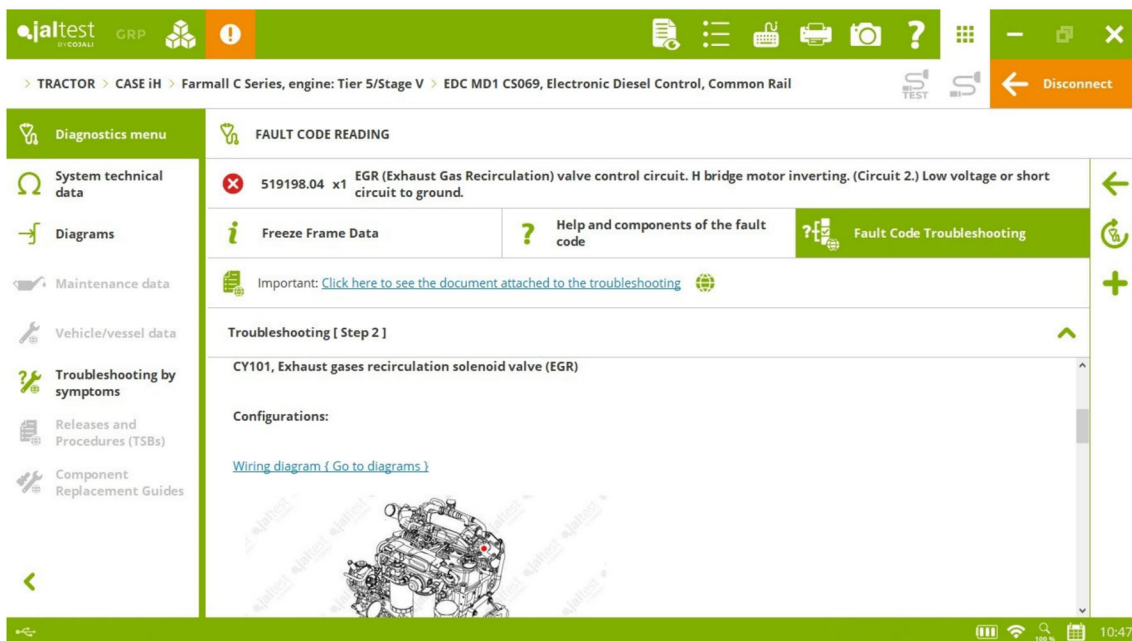
9203

DIAGNOSTICS AND SYSTEMS

Take into account that this document is only a summary of the most relevant information of this new version. For further information, please visit Jaltest Report.

Overall, there are new technical information and **SMART guides** by symptoms and of the most common fault codes available in the workshop thanks to the communication channels with customers such as the technical support offered by the project, training, Jaltest Feedback and “Product improvement” option.

New repair **SMART guides** by fault code in the **FPT EDC MD1 CS069** engine control system, present in several models of tractor and self-propelled and trailing implement makes, such as **CNH, JOHN DEERE, LANDINI, MCCORMICK** or **PELLENC**, among others.



New repair **SMART guides** by fault code in the **JOHN DEERE LEVEL 40** engine control system, present in several models of tractor and harvest equipment.

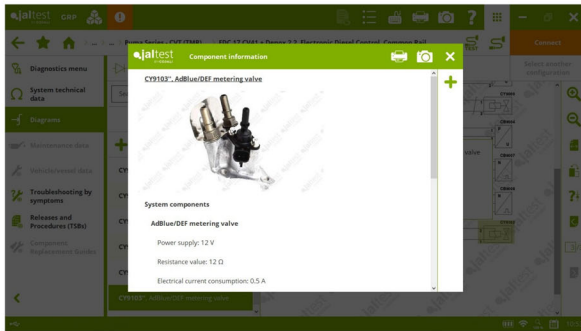
TRACTOR

Overall, new manual diagnostics in several models of different makes such as **CASE iH, JCB, JOHN DEERE, KUBOTA, MASSEY FERGUSON** or **NEW HOLLAND**, among others.

DEUTZ EMR5 - EDC MD1 engine control system, System Display settings in several models of different makes such as **CARRARO, DEUTZ-FAHR, LAMBORGHINI, LANDINI, MCCORMICK** and **TYM**.

CASE IH

⊕ **ADIC** instrument cluster and **RPTO** rear power take-off in the **Farmall C Series** model, **engine: Tier 5/ Stage V**.



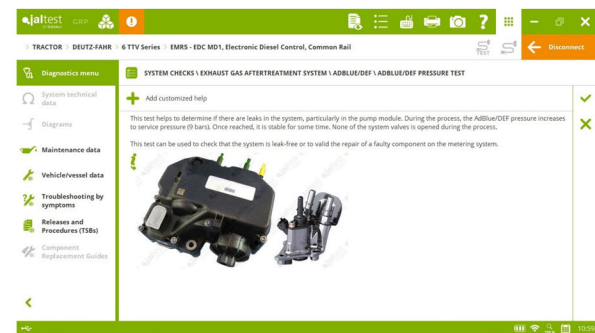
TCM transmission, calibration for **Farmall C Series** models, **engine: Tier 5/Stage V**.

FPT EDC 17 CV41 + Denox 2.2 engine control system for **Optum Series (TMR)** models, **engine: Final Tier 4/ Stage IV, Puma Series - CVT (TMR), engine: Final Tier 4/ Stage IV**, etc. wiring diagram configurations.

DEUTZ-FAHR

SECU central computer, parameter setting of the power take-off, the rear lift and the axle system management (**ASM**) for **6 Series** models.

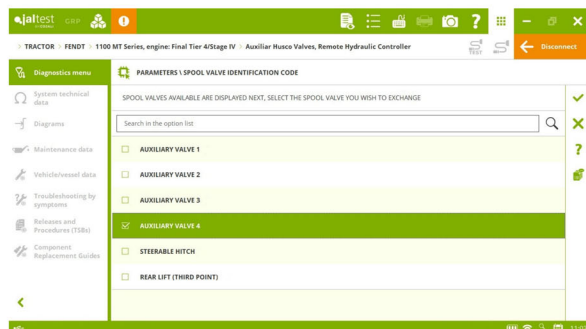
DEUTZ EMR5 - EDC MD1 engine control system, activations and checks of the AdBlue/DEF system for **6 Series, 7 Series, 8 TTV Series** and **9 TTV Series** models, among others.

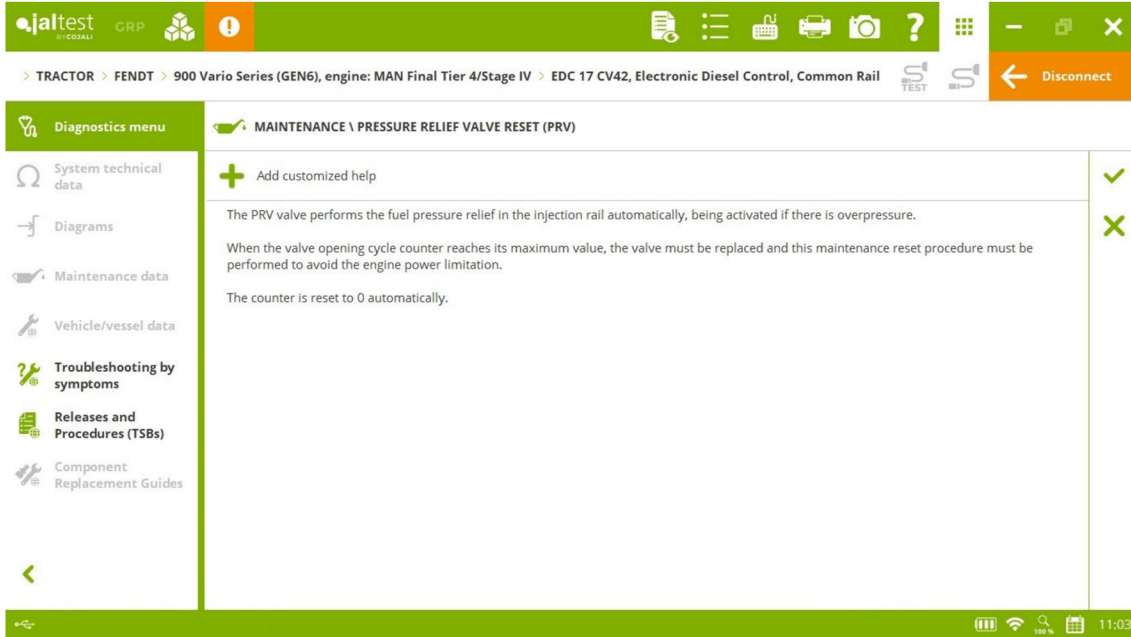


FENDT

⊕ **Husco Auxiliar Valves** hydraulic system for the **1100 MT Series** model, **engine: Final Tier 4/ Stage IV**.

MAN EDC 17 CV42 engine control system, reset of the pressure relief valve for **900 Vario Series (GEN6)** and **1000 Vario Series** models, among others.

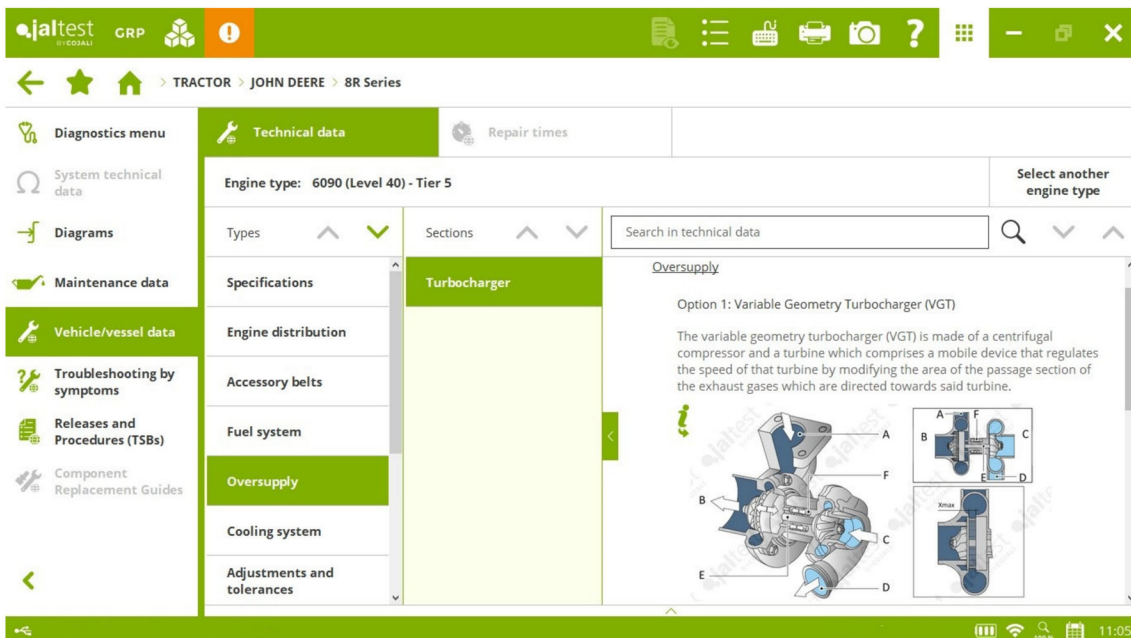




JOHN DEERE

- ⊕ **SB4, SB5** and **SB6** hydraulic systems for the **6R Series** model.
- ⊕ **ATC (MY22)** climate control for the **8R Series** model.

ECU HPCR (Level 40) engine control system, vehicle technical data for new engine types in **7R, 8R** and **9R Series** models.



CCU central computer, calibration of the radar and the GPS-based wheel slip for **7R, 8R** and **9R Series** models.

PTI (AutoPowr-IVT) transmission, reset of the system calibration values for **7R Series** models.

Wiring diagrams by model in **7030 Series**.

LANDINI

⊕ **FPT EDC MD1 CS069** engine control system for **5 Series** models, **engine: Tier 5/ Stage V**.

FPT EDC 17 CV41 + Denox 2.2 engine control system, reset of the temperature sensor of the oxidation catalyst for **7 Robo-six Series (160/180/200/220/230)** and **7 V-Shift Series** models with Final Tier 4/ Stage IV engines, among others.

MASSEY FERGUSON

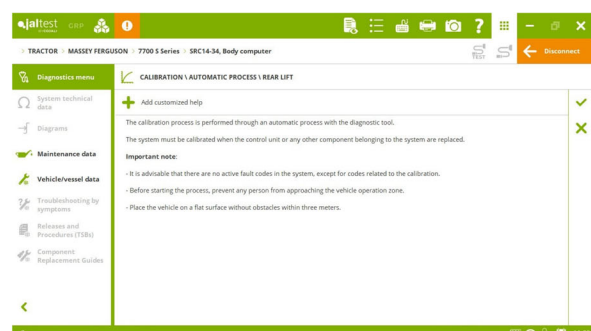
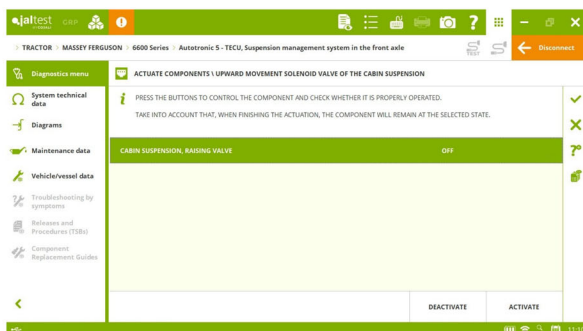
⊕ **SISU EEM4 - EDC 17 C63** engine control system for the **3400 S Series** model.

SRC14-34 central computer, calibrations of the rear lift, the clutch pedal, the forward speed and the rear power take-off for **6700 S, 7700 S** and **8700 S Series** models.

PVED steering system, calibrations of the wheel turning angle sensor and the steering valve for **6700 S, 7600, 7700 S, 8600** and **8700 Series** models, among others.

MFA armrest system, calibration of the spool valve control lever for **6700 S, 7600, 7700 S, 8600** and **8700 Series** models, among others.

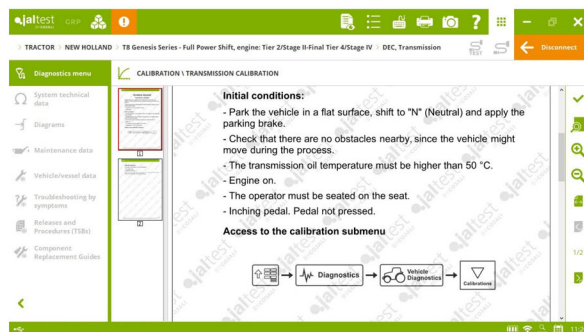
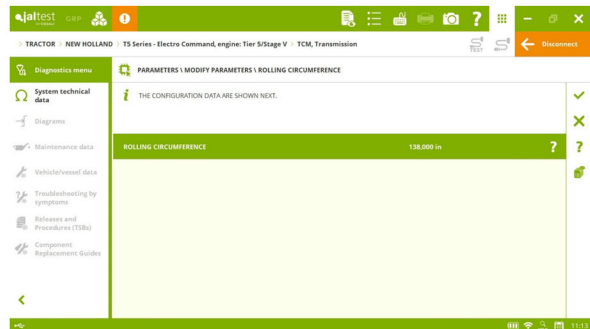
New actuations of the solenoid valves of the cab suspension in the **TECU** system of **6600** and **7600 Series** models.



NEW HOLLAND

FPT EDC MD1 CE101 engine control system, check of the engine cooling fan for the **T6 Series - Auto Command** model, **engine: Tier 5/ Stage V**, among others.

Parameter setting in the **TCM** system for **T5 Series – Electro Command** models, **engine: Tier 5/ Stage V**.



DEC transmission, calibration for **T8 Genesis Series – Full Power Shift** models, **engine: Tier 5/ Stage V** and **T9 PLM Series, engine: Tier 2/ Stage II- Final Tier 4/ Stage IV**.

STEYR

⊕ **FPTO** front power take-off system in the **Terrus Series** model, **engine: Final Tier 4/ Stage IV**.

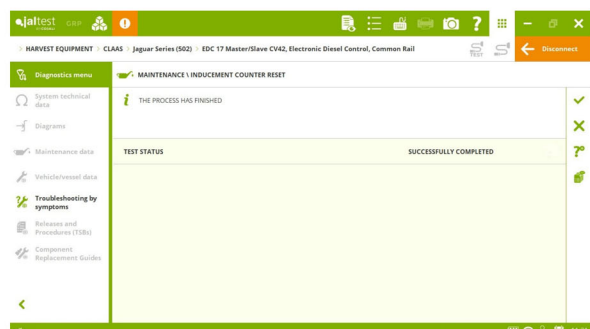
RPTO rear power take-off, activation of the brake solenoid valve of the power take-off for **Kompakt Series** models, **engine: Tier 5/ Stage V**.

VALTRA

Procedure for the maintenance reset of the **SISU EEM4S5 - EDC MD1** engine in the **T154A (AC37.6)** model.

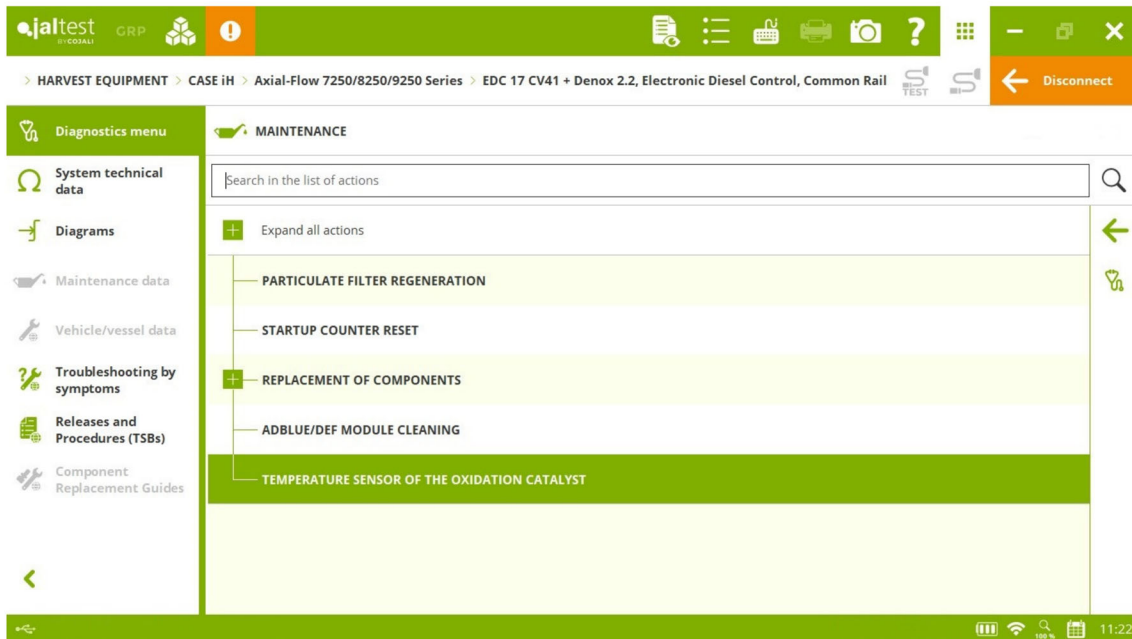
HARVEST EQUIPMENT

MAN EDC 17 Master/Slave CV42 engine control system in models of makes such as **CLAAS, FENDT** and **MASSEY FERGUSON**, maintenance operations related to the O₂ lambda sensor and the counter reset of the inducement mode.



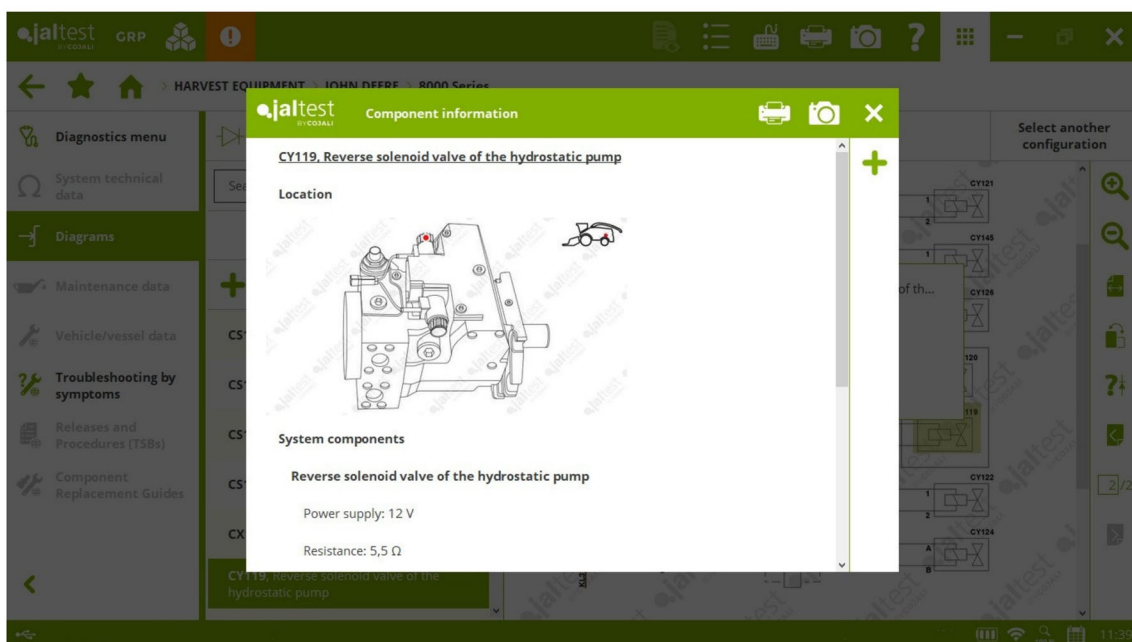
CASE IH

Reset of the temperature sensor of the oxidation catalyst in the **FPT EDC 17 CV41 + Denox 2.2** engine control system for **Axial-Flow 7250/8050/9250 Series** models.



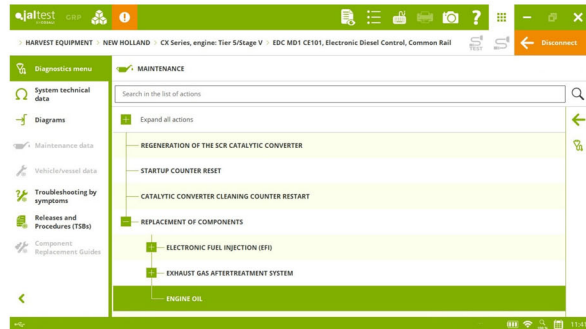
JOHN DEERE

Wiring diagram configurations, technical data and location images in the **ECU HPCR (Level 40)** engine control system for **CP700** and **CS700 Series** models and in the **PTP** transmission for **8000 Series** models.



NEW HOLLAND

FPT EDC MD1 CE101 engine control system, checks and maintenance services.



SELF-PROPELLED AND TRAILING IMPLEMENT

JOHN DEERE

⊕ **ECU HPCR (Level 24 – Tier 2/Stage II)** engine control system in the **R4 Series** model.

VREDO

Wiring diagram configurations in the **JOHN DEERE ECU Denso (Level 16)** engine control system in the **VT2716** model.